

NIGHTINGALE

HOUSE HOSPICE

NEWSLETTER SPRING 2024



2024 EVENTS

NEW GARDENS

NEW INPATIENT UNIT

Welcome



Welcome to our new look Spring newsletter. Spring is a time for new beginnings, and we are excited to unveil our new-look newsletter, and to share with you news of the changes and developments here at Nightingale House.

Firstly, we are delighted that, after months of hard work, our new Inpatient Unit opened in January and has gone from strength to strength, offering increased inpatient facilities to those who are in need of symptom management, medical respite and end of life care.

The hospice's five-year modernisation project is now almost complete, and it ensures that Nightingale House has excellent state-of-the-art facilities which will help to future-proof the delivery of patient care for the foreseeable future. I want to express my thanks to all our staff and volunteers who continued to deliver first class care to patients, even amidst the temporary accommodation of the Wellbeing Centre and the Bradbury Atrium.

The programme of improvements has presented significant financial and logistical challenges for the hospice, but these were overcome thanks to the continued support of staff, the community and local businesses, as well as trusts and foundations. Huge thanks must also go to the Income Generation Team for their efforts in not only securing the funds for the programme, but also ensuring to the departments responsible for ensuring every day running of the hospice. It is a credit to all involved that the project was completed on time and on budget (despite Covid 19). We have achieved the vision set out in 2019 and look forward to welcoming visitors to see the results of the work and its benefits to our patients and their families.

There is just one more step to complete and that is to refresh our outside garden spaces and to

create beautiful, calm and sensory areas to provide tranquil refuge for our patients and their families. The hospice has launched a Garden Appeal to cover the £60,000 cost of the groundwork and planting.

We continue to be very proud of our independence as a charity and although we do receive statutory funding, this equates to less than 20% of our annual expenses. It is through the support of our wonderful community, especially during these difficult economic times, that we can meet the remaining 80% of the costs to run the hospice. Over the past 18 months, we have been involved with 'Hospices Cymru' to advocate for increased financial support from the Welsh Government to offset the wage and utilities increases during this time. The Welsh Government recently agreed to provide a retrospective £4 million cost-of-living grant to be distributed between the 12 hospices in Wales. We received £363,710 from this grant which will go some way towards the costs of the additional costs incurred in 2023. We are still awaiting the 5% inflation uplift promised by Betsi Cadwaladr Health Board to the North Wales hospices to cover costs from April 2023-April 2024.

We appreciate that the Welsh Government is recognising the economic challenges facing hospices and we look forward to continued discussions to ensure more sustainable future support. We will keep fighting for the economic future of Welsh hospices, particularly Nightingale House, your hospice. This year our costs will be £4.9 million, and the majority of this comes from your generous support through events, personal fundraising challenges, legacies, donations and much more. There are plenty of fun events coming up this year and we would be delighted if you could support us in one, several or all of them! If this is not possible there is also the option of supporting us through the Lottery or purchasing one of our Sunshine Meadow flowers.

And on a final note, back to new beginnings. Our Chief Executive, Lauren Emberton, is expecting her first child and has now started her maternity leave. I would like to take the opportunity to thank our former Chief Executive, Steve Parry, for stepping in to cover in Lauren's leave. We are delighted to have Steve back on board and look forward to welcoming Lauren back in a few months.

There is also a new chapter ahead for Mandy Cunningham, Director of Clinical and Patient Services

and Registered Manager, who is heading off for a well-earned rest in her retirement. I would personally like to thank Mandy for her strong leadership, high standards in governance and service development which has ensured that our patient care is second to none. We all wish her a happy retirement. We are looking forward to welcoming our new Director of Clinical and Patient Services and Registered Manager, Claire Bennett, who joins Nightingale House in May from Clatterbridge Cancer Centre.

We would not have achieved what we have over the past few years, without your magnificent support and would not be able to continue providing the high standard of care to our patients and their families. Please continue your greatly valued support, which we cannot survive without, in any way you can. On a final note, if you think you or a loved one could benefit from our services through our direct referral service, please do not hesitate to contact us.

Thank you. Diolch.



Wyt ti'n siarad Cymraeg?

Byddwn yn cynhyrchu fersiwn electronig o'n cylchlythyr Cymraeg, a gellwch gael y ddogfen ar gais neu o'n gwefan. Os hoffech chi gael copi papur, cysylltwch â'n hadran codi arian ar 01978 314292.

Contact us

 Nightingale House Hospice,
Chester Road, Wrexham,
LL11 2SJ

 01978 316800

 info@nightingalehouse.co.uk

 nightingalehouse.co.uk

 [nightingalehouse](https://www.facebook.com/nightingalehouse)

 [nightingalehh](https://twitter.com/nightingalehh)

 [nightingalehouse](https://www.instagram.com/nightingalehouse)



Love, Laughter and Music

There was a heart warming moment at Nightingale House Hospice recently when the Snowden family came together for a special singalong with their beloved mum, Janet.

It all started when the family chatted with a nurse about how much they missed singing together since lockdown. Music runs deep in the Snowden family, and they actually became internet stars during the pandemic by performing live every night for an incredible 150 days!

“My brother Sam was talking to the nurses in the kitchen,” Bethan, Janet’s daughter, explained. “He mentioned Dad used to be in the West End production of Blood Brothers, and the nurses suggested we do a little performance for Mum. Before we knew it, Sam was bursting into her room saying: ‘They want us to sing!’ And just like that, we were all belting out tunes.”

Sam played the piano, they grabbed some shakers, and Dad strummed his guitar. With 150 songs in their lockdown repertoire, they were ready to go. “Singing is just what we do,” Bethan said.

Janet’s family has rallied around her since she was diagnosed with pancreatic cancer last year. It’s been a tough time, but Nightingale House has provided a welcoming and supportive environment.

“We were a bit worried at first because there’s so many of us,” said Andy, Janet’s partner. “But the staff were amazing and reassured us it wouldn’t be a problem. They gave us plenty of space for family visits and were always happy to help in any way they could. Singing together was really special, and we never felt like we were any trouble.”

It even had a positive impact on Andy’s parents, who came to visit Janet on the day of the impromptu concert. “They were shocked to see Janet singing,” Andy said. “But my Dad ended up joining in, and he said afterwards it was one of the best days he’d had in ages. He’s battling cancer too, and he was hesitant about hospice care at first. But seeing how well Janet is doing has changed his mind.”

Janet herself loves Nightingale House. “It’s bright and airy, more like a hotel than a hospital,” she said.

“**I feel like I can just be myself here, and the staff are all so kind and caring. The food is great too, and there’s always someone to chat with.**”



When asked how they feel about Janet being at the hospice, the family all chimed in: “We love it here! We don’t want her to leave...” followed by a burst of laughter.

“The most important thing for us has been the amazing support from everyone at Nightingale House,” Bethan said. “Whether it’s Mum or any of us who needs something, there’s always someone there to help.”

For Janet and her family, Nightingale House has been a beacon of light during a difficult time. It’s provided them with more than just medical care – it’s been a home away from home, filled with love, music, and support.



A New Era of Palliative Care Begins

We recently celebrated a significant milestone in our modernisation journey with the completion of our long-awaited Inpatient Unit. The unveiling of the unit was met with joy and excitement from our staff, volunteers, and trustees, who eagerly awaited its completion since construction began in April 2023.

Senior Nurse Julie Lloyd expressed her pride and enthusiasm, stating:

“**We’ve all been waiting so long to see the new Inpatient Unit. It looks absolutely fabulous! Knowing we are going to care for patients in this environment, I am so proud to work here.**”

Her sentiments were echoed by Health Care Support Worker Michelle Constantine, who described the unit as exceeding expectations and praised its high standard of care and attention to detail.

The project, completed in four phases, saw collaboration with Read Construction, MKG Advisory, SP Projects, TACP, and other partners. Chair of the Board of Trustees, Eluned Griffiths, expressed gratitude for the successful completion of the project within the projected timeframe and budget. She extended thanks to all involved, highlighting the invaluable contribution of our staff.

In addition to their construction efforts, Read Construction and its subcontractors demonstrated their commitment to the hospice by raising over £5,000 and refurbishing the clinical staff toilet area free of charge. Damian Bryan, Contracts Manager at Read Construction, emphasised the company’s pride in being part of such an important project and expressed gratitude to subcontractors for their generosity and support. The modernisation

of our Inpatient Unit was made possible through generous donations from the public, with Ward Manager Laura Hughes expressing gratitude for the ongoing support.

The new facilities will enable us to continue providing exceptional care to patients for years to come.

The Inpatient Unit features 12 single occupancy rooms with en-suite shower rooms, independently controlled heating, air conditioning, and piped oxygen, ensuring comfort and convenience for patients. The ‘Wilson’ and ‘Bradbury’ wings, each equipped with a nurse’s station, prioritise accessibility and support from our dedicated healthcare team.

With the completion of the Inpatient Unit, we reaffirm our commitment to providing high-quality patient care. The space, designed with input from patients, staff, and volunteers, reflects our dedication to patient comfort and well-being. We invite the community to witness the difference the new unit will make in the lives of our patients, symbolising a new era of palliative care.



Time Capsule Encased within the Walls of the New Inpatient Unit

To mark this important moment in history, we sealed a time capsule within the walls of our newly inaugurated Inpatient Unit. Crafted by the skilled hands of John Freeman at Coleg Cambria, the time capsule found its place amidst a gathering of our dedicated staff, Trustees, Read Construction, TACP, DTCC, and community representatives.

During the ceremony, Eluned Griffiths, Chair of Trustees, emphasised the significance of the occasion. She highlighted how the completion of Phase 4 represents the culmination of a £5 million investment over five years. This investment aims to ensure that we can maintain top-tier care in modern, comfortable surroundings for generations to come.

Wrexham Mayor Andy Williams and 10-year-old George Popple played crucial roles in sealing the time capsule within the wall. Inside this capsule lie messages of love, support, and cherished memories from the community, along with photographs capturing the spirit of our dedicated staff, volunteers, and trustees.



Helping patients and their loved ones

We're enhancing patients' experience by introducing new bedroom configurations tailored to individual needs, providing greater flexibility for family visits. Additionally, loved ones can stay in the adjoining relative room (pictured), further enhancing the well-being and comfort of both patients and their families during their time here.



Win Big with our Lottery...

By taking part in the Nightingale House Hospice Lottery, you have the chance to win a portion of the £3,550 weekly prize pool. With ten prizes up for grabs, including a top prize of £2,500, entry is only £1 per week. Joining the lottery not only helps us achieve our fundraising targets, but it also provides you with a straightforward and enjoyable opportunity to support your local hospice and our crucial work.

When you join our lottery, you'll receive a unique six digit lottery number that remains yours for as long as you choose to participate. And the best part? Prize cheques are sent directly to the lucky winners, ensuring a hassle-free experience for all involved.

But what are the odds of winning, you may ask? With approximately 1 in 1,549 chances of clinching a prize, every participant stands a fair shot at walking away with some winnings.

Wondering how winners are determined and prizes are allocated? Rest assured, we employ a random number generator to conduct the draw, ensuring fairness and transparency in every aspect of the lottery.

With a total of £184,600 allocated to prizes annually (£3,550 x 52), you can trust that there's plenty up for grabs in our weekly draws. And here's the best part – a whopping 64% of the lottery income goes straight back into running the hospice, sustaining our essential services for an impressive 58 days.

Give the gift of hope with a hospice lottery gift voucher

Looking for the perfect present for a loved one? Consider gifting them the opportunity to win big with our lottery gift vouchers. Available for over 18s and starting at just £10, these vouchers offer the chance to participate in our weekly draws for up to 20 weeks.

A £20 voucher provides the recipient with 20 chances to win the £2,500 jackpot and other fantastic prizes. Plus, with each voucher purchase, you're directly supporting our patients and their families during their time of need.

Whether it's a birthday, Christmas, Mother's Day, or any other special occasion, our lottery gift vouchers are the perfect way to spread joy while making a meaningful impact in our community. After all, it's the gift that keeps on giving. Join lottery today and be a part of something truly special. With every ticket purchased, you're not just taking a chance – you're making a difference.

Make your big day even more special with our wedding favours

Planning a wedding? Consider adding a heartwarming touch to your special day with our special charity wedding favours. Not only will these thoughtful gifts delight your guests, but they also offer the chance for one lucky person to walk away with our £2,500 weekly jackpot.

Our beautifully crafted favours double up as name placeholders and are available in portrait or landscape designs.

With our wedding favours, you'll not only add an element of excitement to your celebration but also contribute to the invaluable work of the hospice.

To find out more please call the lottery office on:

01978 313134 or email **lottery@nightingalehouse.co.uk**



“This year’s stunning Sunshine Meadow flower is the magnificent Peony. It will be displayed at Chirk Castle from June 1st to June 30th, 2024.”

To find out more, dedicate a peony to someone special, visit our website or scan the QR code below:
nightingalehouse.co.uk





Timeless Food Classics served in Wrexham Town Centre

Located in the heart of Wrexham's Regent Street, Nightingales Café offers culinary classics in a safe and clean environment. Managed by the acclaimed Caffi Cwtch team, this contemporary oasis provides patrons with a wholesome dining experience that supports our hospice.

Homemade Delights

Step into Nightingales Café and embark on a journey of taste with our delicious homemade soup and cakes. Crafted with passion, each slice is a testament to the artistry of our staff. Whether you indulge in the decadence of a sweet cake or a tasty soup, every spoonful promises a symphony of flavours.

Freshly Ground

Elevate your coffee experience with our freshly ground brews, prepared to perfection. Whether you crave the creamy richness of a latte or the robust intensity of an espresso, our coffee types cater to

every preference. As you immerse yourself in the rich aroma of our coffee, let the stresses of the day melt away with each sip.

Family Favourites

Our menu offers a delightful array of dishes from light breakfasts and lunches. Indulge in perfectly grilled toasties, a selection of jacket potatoes, and soul-warming soups, all crafted with quality ingredients and prepared to order. At Nightingales Café, each dish blends tradition with innovation to tantalise your taste buds.

5-Star Hygiene

At Nightingales Café, cleanliness and hygiene are paramount. Just like our sister establishment, Caffi Cwtch, we proudly maintain a pristine 5-star hygiene rating, ensuring the safety and satisfaction of our guests. Relax in our stylish and immaculate space, knowing

that every precaution has been taken to cater to allergies and intolerances.

Community Connection

Join us in fostering a sense of community and connection. Whether you're hosting a business meeting or enjoying a leisurely brunch with loved ones, Nightingales Café offers the perfect setting. Embrace the opportunity to give back to your local community while savouring delicious cuisine in our welcoming environment.

Help us to help you

Every sip, every bite, and every pound spent helps our hospice to continue to offer free care in our community.

Where are we?

Nightingales Café
5 Regent Street, Wrexham. LL11 1RY
Open from 9.30am - 2.30pm.

Introducing New Bathing Service: Enhancing Comfort and Well-being



We are excited to announce the launch of a new service that aims to cater to the personal care needs of our patients with a unique Bathing Service offering.

For many, with only showers available at home, community members can miss out on the therapeutic benefits and sheer comfort of soaking in a warm tub. The hospice clinical team saw an opportunity to bridge this gap in care and provide a much-needed service to our patients.

The Bathing Service is designed to offer a spa-like experience, where

patients can indulge in personal care while enjoying the soothing sensation of a bath. Our team is equipped to assist patients with physical or mobility issues, ensuring their safety and comfort throughout the bathing process. From manual handling support to specialised seating arrangements, we strive to make the experience accessible to all qualifying patients.

But who qualifies for this service? Any patient with a life-limiting illness who can maintain sitting balance is eligible to access the Bathing Service. Referrals can be made through Nightingale House

direct or via community channels, with assessments conducted to determine suitability.

The benefits of the Bathing Service extend beyond physical cleansing. Patients often report feeling refreshed, relaxed, and invigorated after their bath, thanks to the calming environment and attentive care provided. This holistic approach to well-being aligns with Nightingale's commitment to enhancing the quality of life for our patients.

Patients and Staff Praise Our New Ward: A Sanctuary of Exceptional Care and Support

We are delighted to share the overwhelmingly positive feedback we have received from patients regarding our new ward. They have described it as a "sanctuary" where they have received exceptional care and support. Here, it is the little things that make the biggest difference – the kind words, warm smiles, and reassurance that make patients feel at home.

Our patients have expressed their appreciation for the new ward, from the cosy rooms to the high-quality care. However, it is not just the physical space that stands out – it is the holistic approach to care that truly shines. With professionals from various disciplines working together, we are able to provide personalised support tailored to each patient's needs.

Moreover, it is not only the physical transformation that is making a difference. The change in attitude

and atmosphere is truly special. The once dated and plain corridors now feel warm and inviting, creating a space that our clinical staff are proud of.

We are dedicated to enhancing our patients' quality of life with amenities and services that go beyond basic care. From beauty treatments to hydrotherapy, we are committed to providing an exceptional level of care.

Clinical Services and Patient Flow Lead, Paula Pritchard, shared her experience of the new Inpatient Unit:

"Experiencing the unveiling of the new Inpatient Unit was one of the highlights of my nursing career. I felt deeply emotional and humbled, as the generous donations that made this state-of-the-art facility possible are a testament to the profound



impact the hospice has on our community. These contributions evoke memories of love, laughter, and tears from the old ward.

“It is an honour and a privilege to carry on that same dedication and passion for our new patients and their families in such a beautiful environment, supported by the most wonderfully caring and dedicated staff.”



Alps Trek

Are you ready to conquer the majestic landscapes of the French Alps while making a difference in your local community? Get ready to lace up your boots and join us for an exhilarating fundraising trek this September. This adventure promises breathtaking scenery, physical challenges, and the opportunity to support a noble cause.

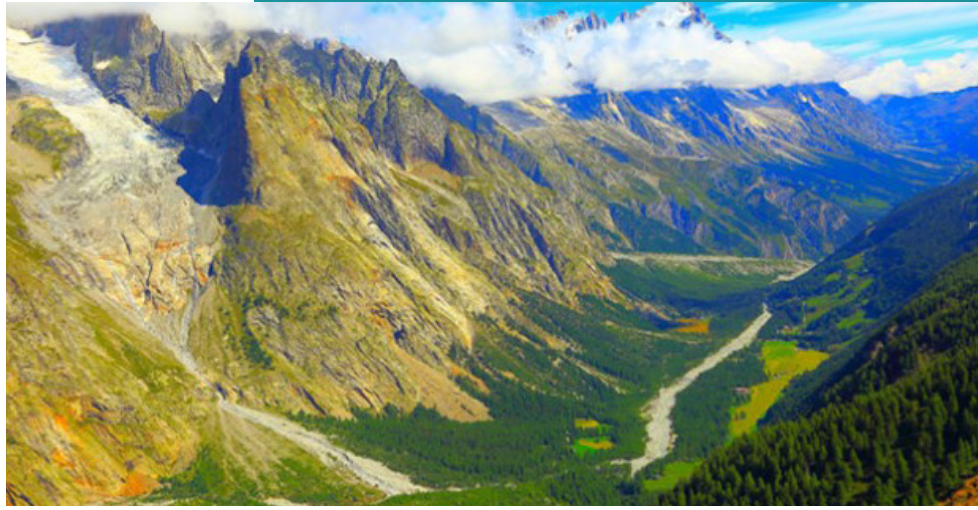
Set against the breathtaking backdrop of the stunning Mont Blanc region, this 43km trek offers participants a unique opportunity to experience the beauty of nature while raising funds for a worthy cause. Starting from Chamonix, France, we will take in two countries in just three days of trekking. This route will be full of challenging ups and downs, but we will see everything from breath taking panoramas of the "Tour du Mont Blanc" to traditional Swiss villages and colourful open meadows, where we'll see local farmers tending to the land.

But this trek is about more than just breathtaking views and personal achievements. By participating, you'll be supporting the vital care and support offered at Nightingale House Hospice, making a real difference to local people in some of the most challenging times.

As you trek through the pristine landscapes of the French Alps, you'll also have the opportunity to connect with like-minded individuals who share your passion for adventure and philanthropy. Together, you'll forge lasting friendships and create memories that will last a lifetime.

In addition to the physical challenge and the opportunity to give back, this trek also offers participants a chance to immerse themselves in the rich culture and history of the French Alps. From charming alpine villages to rustic mountain huts, you'll have the chance to experience the unique charm of this iconic region.

So, are you ready to embark on the adventure of a lifetime? Join us this September for a fundraising trek to the French Alps and experience the thrill of exploration, the joy of giving back, and the camaraderie of fellow adventurers. Together, we can make a difference, one step at a time.



11th - 15th September 2024

Spaces are limited for this trek. Please contact Supporter Engagement Officer, Chloe Deacon, for more information.

Chloe.deacon@nightingalehouse.co.uk
01978 314292

Reasons to Partner with Us

We work closely with businesses of all sizes to create a mutually beneficial, tailored Partnership. Not only will you make a difference to

our patients and their families but also be able to enjoy the benefits of being associated with a highly respected local charity.



Engage Staff

Fundraising creates great team building opportunities.

Raise Your Profile

Raise your profile and help expand your customer base.

Change Lives

Your support will make a difference.

Unlock New Opportunities

Unlock new opportunities to meet and engage with new potential business partners at events.

Marketing Benefits

Such as: online Advertisement, Press, Printed material.

“

really enjoy meeting new contacts, finding ways we can work together to have a positive impact on both their business and Nightingale House.

We are so grateful for the cooperate support we receive from local business, I often find they are surprised with what they take away from the experience. My aim is to make our corporate partners feel like part of the Nightingale House family and show them how they have made a difference.

For more information email:

sarah.povey@nightingalehouse.co.uk

Sarah Povey

Corporate Partnership Lead



”



Visit our ebay store
grab a bargain

2024 Events

Sunshine Meadow 01/06/24 - 30/06/24

Introducing the exquisite 2024 Sunshine Meadow Peony, now available for purchase. You can visit Chirk Castle from June 1st to June 30th and immerse yourself in the breathtaking display to celebrate and honour the lives of treasured loved ones, friends and family.

Sponsors: Excell supply, Kronospan, DTCC and Entrec.



Corporate 5-A-Side 02/06/24

Come and join us to experience the passion, competition and camaraderie of the beautiful game. The perfect opportunity to drum up team morale and kick-off new connections. Each team will play in a unique series of five-a-side matches to compete to win the Nightingale trophy.

Sponsor: READ



Midnight Walk 29/06/24

Our flagship event The Midnight Walk is returning for the 16th year. Starting in Llwyn Isaf to celebrate in style before the walk commences, supporters across the community will once again join forces to help raise much needed funds and light up the streets of Wrexham.

Sponsor: Hoya



Sunshine Meadow



5-a-side



Midnight Walk



MotorFest



Balloon Carnival



Strictly Nightingales

Wrexham MotorFest 27/07/24

Join us on Saturday 27th July 2024 at Penyllan Farm, Marchwiel for Wrexham's BIGGEST motor show! We will be joined by a variety of different cars, bikes, tractors and trucks, from classics to super-charged! As well as entertainment and activities for all the family to enjoy!

Sponsor: R.F. Bellis



Oswestry Balloon Carnival 17/08/24 - 18/08/24

Situated in the heart of Oswestry in Cae Glas park hosting family entertainment, stalls and of course hot air balloons. People journey from near and far to partake in the festivities, offering a plethora of activities and entertainment suitable for the whole family.



Strictly Nightingales Showcase 09/11/24

For the first time ever Strictly Nightingales is taking to the stage for all to enjoy! This year we will be holding an additional 'Strictly Show' at the Stiwt. Based on the 'Strictly Come Dancing' TV programme it includes 10 corporate supporters teaming up with professional dancers competing to win the 'Strictly Nightingales' Trophy!

For more information or to sign up, please visit our website.

nightingalehouse.co.uk/events

Teen Blacksmiths Craft Life-Size Welsh Dragon

Two teenage blacksmiths, Ollie and Harvey, have captured the imagination of their community with their latest creation: a majestic life-size Welsh Dragon named Dixie. The talented duo embarked on this ambitious project as a fundraiser for Nightingale House Hospice, a charity close to their hearts, showcasing their remarkable skills and dedication to their craft.

Their journey began at the start of 2024, amidst the optimism of New Year's Day. Gathering with their family, Ollie and Harvey brainstormed ideas for a significant fundraiser to kick off the year. Inspired by their Welsh heritage and the legacy of their craft, they conceived the bold notion of bringing to life a Welsh Dragon.

Undeterred by the scale of the task ahead, the lads wasted no time in getting to work. They commenced the monumental project on January 6th, starting with the fabrication of a metal skeleton to serve as the dragon's foundation. Each intricate scale was meticulously hand-cut, with over 2000 scales adorning Dixie upon completion. Despite encountering challenges along the way, such as crafting the dragon's



expansive wings, Ollie and Harvey's determination and perseverance prevailed, demonstrating their ingenuity and skill.

However, their ambition didn't stop there. They aimed to take Dixie to new heights by devising a plan to enable the dragon to breathe fire, which involved fabricating a pipe running through its body. This innovative addition added an extra layer of awe-inspiring spectacle to their creation.

For three months, Ollie, Harvey, and their grandad Tony dedicated themselves to the project, working tirelessly three days a week after school and throughout the weekends at their workshop in Wrexham. Under the guidance of their beloved grandad, himself a former blacksmith, the young artisans honed their craft, embodying the seventh generation of blacksmiths in the Roberts family lineage.

Their endeavours culminated in the unveiling of Dixie the Dragon, a monumental achievement that has captured the imagination of the

community. The dragon embarked on a tour across Wrexham and its surrounding areas, captivating audiences with its magnificence and serving as a symbol of hope and unity.

Reflecting on their remarkable journey, Ollie and Harvey expressed their gratitude for the opportunity to support Nightingale House Hospice through their passion for blacksmithing. Our Community Fundraising team commended the duo's longstanding commitment to the cause, noting that Dixie represents their most significant contribution yet.

As Dixie continues its tour, visiting various venues and captivating audiences young and old alike, its legacy as a symbol of creativity, resilience, and compassion endures. On April 27th, Dixie will find its forever home at Stok Cae Ras, the hallowed grounds of Wrexham Football Club, marking the finale of a journey that has touched the hearts of many and inspired a community to come together in support of our hospice!





Dixie

aec
Engineering Limited
Complete Engineering Solutions
aecengineeringlimited@gmail.com www.aecengineering.co.uk

O&H
METAL DESIGN

O&H
METAL DESIGN

O&H
METAL DESIGN

HAVE YOUR PRE-LOVED
FURNITURE COLLECTED...

FOR FREE!



SCAN ME!

Scan this code or visit:

nightingalehouse.co.uk/collection-service
to book your collection!

DON'T FORGET
TO TICK THE
GIFT AID BOX!



Strictly Nightingales 2023 Raises £57,000!

On a crisp October evening, the Strictly Nightingales 2023 event unfolded, bringing together a fusion of dance, community spirit, and heartfelt generosity. The glittering ballroom at the Carden Park Hotel played host to an unforgettable night, where local stars and amateurs alike twirled, dipped, and sashayed — all in the name of raising funds for Nightingale House.

Ten amateur dancers, representing local companies, had spent months perfecting their routines alongside professional partners. Their dedication was palpable as they vied for the prestigious Strictly Nightingales Trophy. The audience held its breath, and the judges — Chloe Hewitt, James Wilson, Lilia Kopylova, and Steve Williams — scrutinised every step, celebrating both grace and determination.

Before the main event, six representatives from DTCC set the stage ablaze with their group performances. Their synchronised moves and infectious energy set

the tone for an evening filled with camaraderie and the unmistakable spirit of Strictly.

Transcontinental, represented by Lynn Roberts, stood proudly as a sponsor. Lynn, the Human Resources Manager, summed up the night: “Wonderful, well-organised, and special.” She watched her colleague, Sarah Mazzarella, glide across the dance floor, and her pride was evident. But it wasn’t just about the dancing; it was about supporting their local hospice and making a difference.

The evening took a poignant turn when fundraiser and former employee, Bethan Scott, stepped forward. With grace and emotion,

she shared her personal connection to Nightingale House Hospice. Bethan spoke of the invaluable support she and her late husband, Dave, received during his final months. Her words resonated, particularly when she highlighted the significance of the new Inpatient Unit, which welcomed its first patients this year.

Strictly Nightingales 2023 wasn’t just about dance — it was a celebration of community bonds, compassion, and unwavering commitment. As the glittering chandeliers reflected the joy in the room, everyone present knew they were part of something truly special. A huge well done to everyone involved!



Nightingale House: Where Careers Shine Bright

Nightingale House stands tall not only as a beacon of healthcare excellence but also as an exemplary local employer offering a diverse array of career opportunities across North East Wales and the borders. From clinical, therapeutic, and medical roles to retail and facilities management, finance, fundraising, HR and even marketing and catering. Nightingale House is not just a workplace but a place of growth and fulfilment. Let's delve into why Nightingale House is celebrated as a brilliant place to work and explore the countless avenues it offers for employment, career advancement and personal development.

One of the most compelling reasons to consider Nightingale House as an employer is the huge impact all roles have on patient care. Whether you're a seasoned medical professional looking to make a difference in clinical settings, a compassionate therapist seeking to empower individuals on their journey to wellness, or a dynamic marketer with a flair for creativity, Nightingale House has a role tailored to your skills and aspirations.

■ Clinical and Medical Roles:

Nightingale House offers a plethora of clinical and medical roles, spanning various specialties and levels of expertise. The organisation provides ample opportunities for healthcare professionals to thrive and make a meaningful impact on patient care.

■ Therapists and Social Workers:

For those passionate about mental health and wellbeing, Nightingale House offers fulfilling roles for therapists and social workers. Whether it's counselling patients through challenging times or supporting individuals on their personal goals, these roles play a crucial part in nurturing holistic healing and support.

■ Diverse Support Functions:

Beyond direct patient care, Nightingale House recognizes the importance of support functions in ensuring smooth operations. From finance and fundraising, HR, administration and facilities management to marketing, retail and catering, the hospice relies on a talented team of professionals to drive efficiency and innovation across all sides of its operations.

■ Opportunities for Growth and Development:

At Nightingale House, excellence isn't just a goal; it's a way of life. The hospice's commitment to providing superior healthcare services is mirrored in its approach towards its employees. A culture of continuous improvement fosters an environment where employees are encouraged to excel and grow both personally and professionally. Employees are empowered with ongoing training and development opportunities to enhance their skills and advance their careers within the organisation. Whether it's through mentorship, education, or leadership training, Nightingale House invests in its employees' success.

JOIN US!

Laura
Ward Manager

Our World: A Glimpse Behind the Scenes

Working in hospice care is not just a job, it's a calling. It's about embracing the whole person, honouring dignity above all, and witnessing life's raw beauty in moments of grief, resilience, and compassion. Hospices are sanctuaries, warm and welcoming spaces where families find comfort and support during difficult times. As part of our hospice team, you'll join a tight-knit family of dedicated professionals who lift each other up as they walk alongside patients and families on their journey.

Get Involved

Nightingale House stands out as a brilliant place to work, offering a diverse range of career opportunities across various disciplines. Whether you're drawn to clinical care, support functions, or creative endeavours, Nightingale House provides a nurturing environment where employees can thrive and make a difference in the lives of others. Join Nightingale House and embark on a rewarding journey where your career aspirations are not just supported but celebrated.

To find out more or to send your CV please call HR on **01978 316800** or email hr@nightingalehouse.co.uk



SATURDAY
27
JULY

11AM
UNTIL
6PM

FREE ENTRY

PENYLLAN FARM
WREXHAM ROAD
MARCHWIEL, LL13 0PF



W R E X H A M

MOTORFEST

NIGHTINGALEHOUSE.CO.UK

Behind the Scenes: The Clinical Admin Department

A seamless patient experience doesn't happen by chance. Behind the scenes, the Clinical Admin Department play a vital role in ensuring efficient operations and high-quality care. Led by Clare Draper, our dedicated Clinical Admin Lead, the department embodies precision and care, managing the administrative needs of successful healthcare delivery.

They have a diverse range of tasks, including personal assistance to the Medical and Clinical Directors and oversight of essential responsibilities. They meticulously handle Clinical Management Information, maintain records, compile patient feedback, and



lead crucial meetings. They ensure seamless communication, check policies are implemented and audits are prepared for.

The team serve as the linchpin of our clinical infrastructure. Their meticulous attention to detail ensures streamlined scheduling, precise referrals, and well-organised patient files, eliminating bottlenecks and delays, which maintains the standard of care for every patient.

Their impact extends beyond the clinic walls, encompassing procurement management, information systems coordination, and the coordination of memorial services. These silent champions work tirelessly behind the scenes to uphold our charity's high standards.

Their dedication and diligence form the foundation of the hospice, promising compassion, efficiency, and excellence in every patient's journey. Thank you.

Leaving a Lasting Legacy: The Profound Impact



In the final stages of life, hospice care often becomes a beacon of comfort and support for individuals and their families, offering compassion, dignity, and specialised care. Yet, the continuation of these invaluable services relies heavily on the generosity of donors. While many contribute during their lifetimes, there's a powerful and often overlooked means of support: leaving a gift to a hospice in one's will.

The act of including a hospice in your will extends far beyond a simple financial transaction. It symbolizes a commitment to the wellbeing of future patients and families navigating the difficult journey of life-limiting illness. These gifts, whether large or small, have a profound impact on the sustainability of hospice services, ensuring that compassionate care remains accessible to all who need it.

One of the most significant advantages of leaving a gift to a hospice in your will is its ability to provide stable, long-term funding. These donations contribute to essential programs such as pain management, bereavement support, and volunteer services, enhancing the quality of care for patients and their loved ones. Moreover, they enable hospice organizations to invest in staff training, medical equipment, and facility upgrades, further enhancing their ability to provide exceptional end-of-life care.

In recent times legacies have helped navigate the hospice through the difficult times of

the Covid 19 pandemic, as well as supporting the recent redevelopment of hospice facilities, all contributions are very much appreciated and used to ensure the hospice continues to provide exceptional care.

Leaving a gift to a hospice in your will can offer a sense of fulfilment and purpose to the estate planning process.

“
It is a profound gesture with far-reaching positive impacts. It ensures the continuation of vital end-of-life services, inspires others to support hospice care
”

and brings comfort and peace of mind to donors and their families. By including hospice in your estate plans, you can leave behind a legacy of compassion and support that will touch countless lives for years to come.

Gareth's Inspiring Legacy at Nightingale House

Former policeman, Gareth James, and his family have left an enduring legacy of support by sponsoring a patient room at Nightingale House Hospice, named Jasmine, in honour of their cherished memories.

In 2021, Gareth was confronted with the daunting reality of stage 4 stomach cancer. Refusing to succumb to despair, Gareth embarked on a relentless pursuit of treatment options, embracing dietary changes, and exploring alternative therapies, fuelled by an unwavering determination to defy the odds. Beverley James, Gareth's devoted wife, fondly recalls his unwavering resolve, stating, "When Gareth received the diagnosis, he was resolute in his determination to fight. Despite the challenges, he remained steadfast in his pursuit of finding solutions."

Throughout Gareth's journey, Nightingale House emerged as a beacon of support, providing invaluable care and compassion. From holistic therapies to medical assistance, Gareth found solace in the nurturing environment fostered by our dedicated staff.



Beverley reflects on the pivotal role of Nightingale House in Gareth's journey, remarking: "The hospice provided Gareth with a sanctuary of care and support. From Reiki sessions to outpatient appointments, he found comfort and relief in their compassionate care."

Inspired by the profound impact of their experience, Gareth and Beverley made the heartfelt decision to sponsor a patient room at Nightingale House. Named Jasmine, in homage to their shared memories of travels to the Far East, the room embodies Gareth's enduring spirit of resilience and hope. Laura Hughes, Ward Manager, speaks to the significance of the newly designed patient rooms, emphasising their commitment to providing a luxurious yet comforting environment for patients and their families. "The Jasmine room and all patient rooms have been meticulously designed not only to meet clinical standards but also to offer patients a luxurious experience akin to a high-end hotel. Our overarching goal is to create a welcoming, warm, and homely atmosphere throughout our new ward."

Though Gareth's journey sadly ended in December 2023, his legacy of courage and resilience lives on. Through their philanthropic gesture, Gareth and Beverley have ensured that others facing life-limiting conditions will find solace and support at Nightingale House Hospice for years to come. Reflecting on her husband's resilience, Beverley said: "In a way, Gareth did win his battle... He lived for two years longer than the doctors expected, which is huge!"

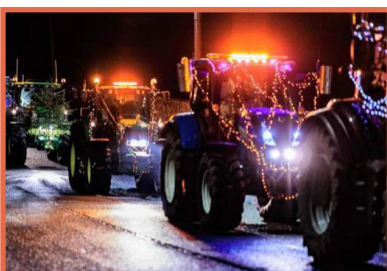
“
He didn't let anything stop him and wanted to help other people.
”

In celebrating Gareth's indomitable spirit, we are reminded of the power of perseverance and the transformative impact of compassionate care. His legacy serves as a testament to the human spirit's capacity to never give up.

Community

Third Party Events

From quiz nights to tractor runs, domino knockouts to coffee mornings, and Christmas raffles to homemade jewellery sales, our Community has once again gone above and beyond for Nightingale House. We want to say a massive THANK YOU to every wonderful person or group who has held an event in aid of the hospice. Your kindness and generosity means more to us than you will ever know.



Fundraising Groups

Our amazing Fundraising Groups have been incredibly busy, raising money for Nightingale House in all sorts of exciting ways, including selling Christmas cards, holding curry nights and coffee mornings. We even have a new Wrexham group who held a fantastic Christmas wreath-making Workshop! We couldn't do what we do without these wonderful, dedicated people. So, thank you!



Rudolph Run

In December, schools, nurseries, running groups and sports teams from across the area took part in this year's Rudolph Run – and it was a good one! An incredible £17,252.51 was raised, and a lot of fun was had along the way!



Christmas Tree Collection

This year, our Christmas Tree Collection was bigger and better than ever. Thanks to our wonderful community, we were able to collect over 1,500 real Christmas trees from hundreds of your homes across the local area. Our wonderful volunteer drivers worked extremely hard all day, and helped us to raise over £18,000 for patient care here at the hospice – amazing!



Garden Appeal: Nurturing Nature, Nurturing Lives

This spring, the hospice team are launching the final part of their appeal to complete the redevelopment of the hospice facilities on Chester Road.

Our vision is to create several refreshed garden areas that will become an oasis of peaceful calm and beauty for patients and a place for loved ones to find a moment of quiet reflection.

The team needs to raise £60,000 to buy the plants, flowers, trees, and materials needed to create four different lush, beautiful gardens.

Lauren Emberton, Chief Executive, said: "The newly refurbished

hospice facilities and our amazing staff will of course both be fundamental to providing the highest quality of care. But, to give our patients and their loved ones the chance to enjoy their time to the fullest, that's where the gardens will play their role.

"With the hospice refurbishment complete, we are now focused on creating the very best gardens for our patients, offering local families a place of vibrant life and colour as well as peace and tranquillity."

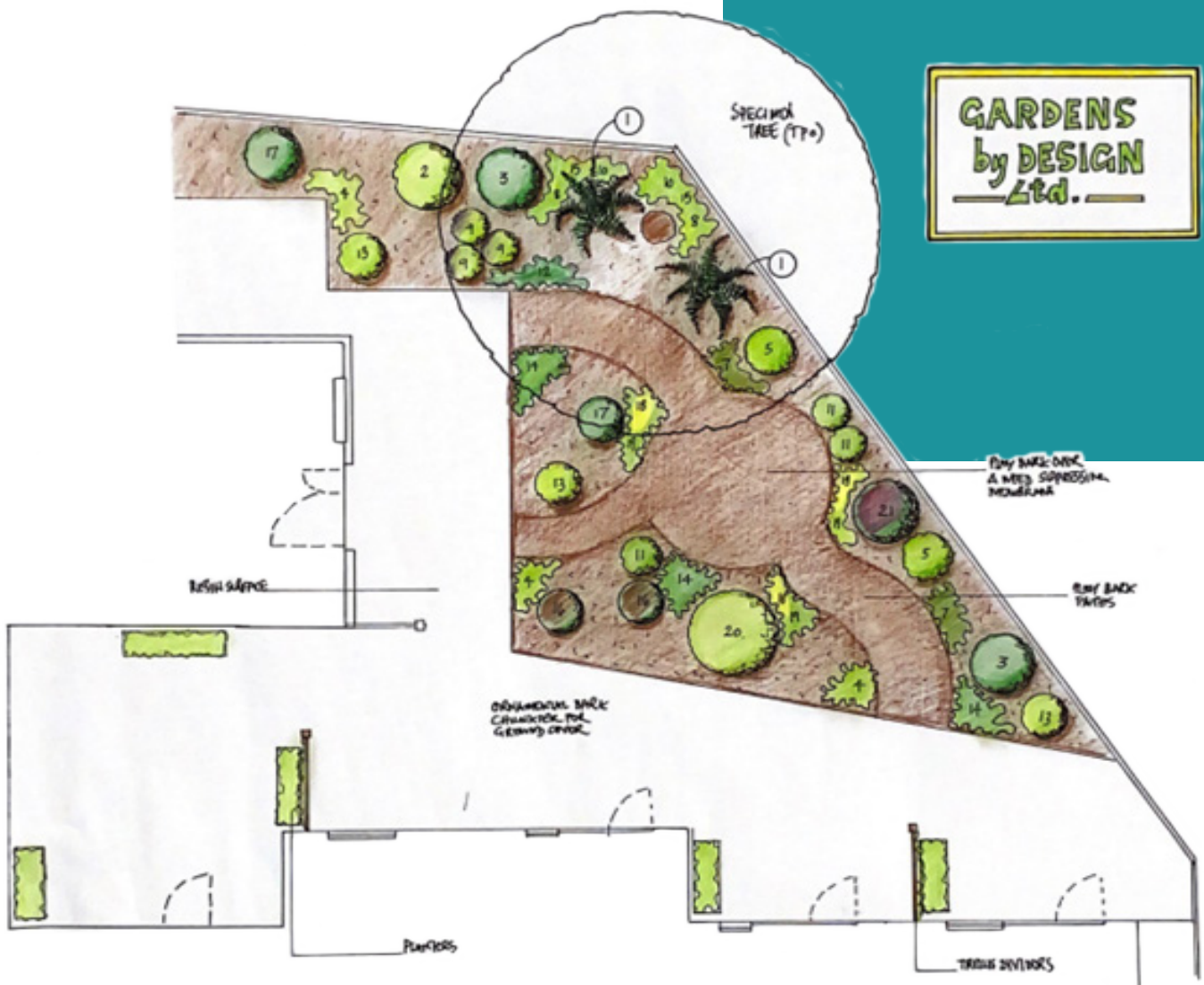
The hospice team are working with local landscape gardener, Andrew Harper from Gardens by Design, together with their army of hard-

working volunteer gardeners to carefully design and curate the new grounds and gardens to allow patients of all abilities and their families to enjoy outdoor space as much as they can. Patients who attend their Wellbeing service will have the chance to spend time outside in the gardens. For inpatients who can walk, or who can be helped in a wheelchair, there will be paths linking the different areas and for those who are bedbound, the doors from the inpatient rooms allow for beds to be brought outside where a garden of vibrant colour, sound and scent will be created in which to relax and enjoy.



For more information, please visit our website or scan the QR below:





Carolyn James, Wellbeing Centre Lead Nurse, explained:



Wellbeing is essential to the journey of our patients, and outside spaces have always been integral in enhancing the support and care we offer at Nightingale House. Now that the Inpatient Unit is back up and running and we can provide care at full capacity again across the hospice, we are thinking ahead about how we can improve wellbeing in all aspects and areas of the hospice. We would love to improve the garden areas to offer our patients somewhere quiet to sit,

reflect and relax in nature, or somewhere to practise gardening skills to enhance mobility, or simply somewhere bright and beautiful to socialise.



Supporting the appeal, humanitarian and author Sir Terry Waite emphasised the transformative impact the garden will have on patients' lives:



It was a privilege for me to have known the founder of the hospice movement, Cicely Saunders. She was a woman of compassion, and her life and work has inspired thousands of volunteers across the world to provide loving care for those who are living with life-limiting conditions. Nightingale House Hospice is now asking if you will join them in raising funds for their garden. Once completed, these gardens will be a place of peace and tranquillity for patients and their families to enjoy during their time at Nightingale House Hospice. Please help them. A donation, no matter how small, will bring some joy to many whom you may never know but who will be grateful for your compassion and care.



Midnight Walk 2024

Lighting the Way for Nightingale House in 2024

In a heartwarming display of community spirit and generosity, last year's Midnight Walk raised over £64,000 for Nightingale House Hospice. This remarkable achievement is a testament to the unwavering support of our dedicated supporters, whose commitment year after year continues to inspire us.

At the heart of our fundraising efforts stands the Midnight Walk, that not only raises vital funds but also brings a sense of unity and support within our community. It's a night that holds special significance for many, as we come together to honour the lives of loved ones and make a tangible difference in the lives of others.

This year's walk will take place on Saturday 29th June. Starting from Llwyn Isaf, Wrexham supporters from across the region will gather once again to embark on a journey of solidarity and compassion. Registration opens at 9pm, with a buzz of excitement filling the air as participants gear up for the night ahead.

As the clock ticks towards midnight, Llwyn Isaf comes alive with live performances and activities, ensuring there's never a dull moment. Local food vendors will tantalise taste buds with delicious treats, while the return of the iconic bunny ears and new glow merchandise promises to add a touch of flair to the occasion.

Whether you're a seasoned walker or taking your first steps in supporting our cause, there's a route for everyone to enjoy.

Upon registration, participants will receive their iconic Midnight Walk T-shirt, setting the stage for a night filled with camaraderie and community spirit. With live music and entertainment adding to the festive atmosphere, every

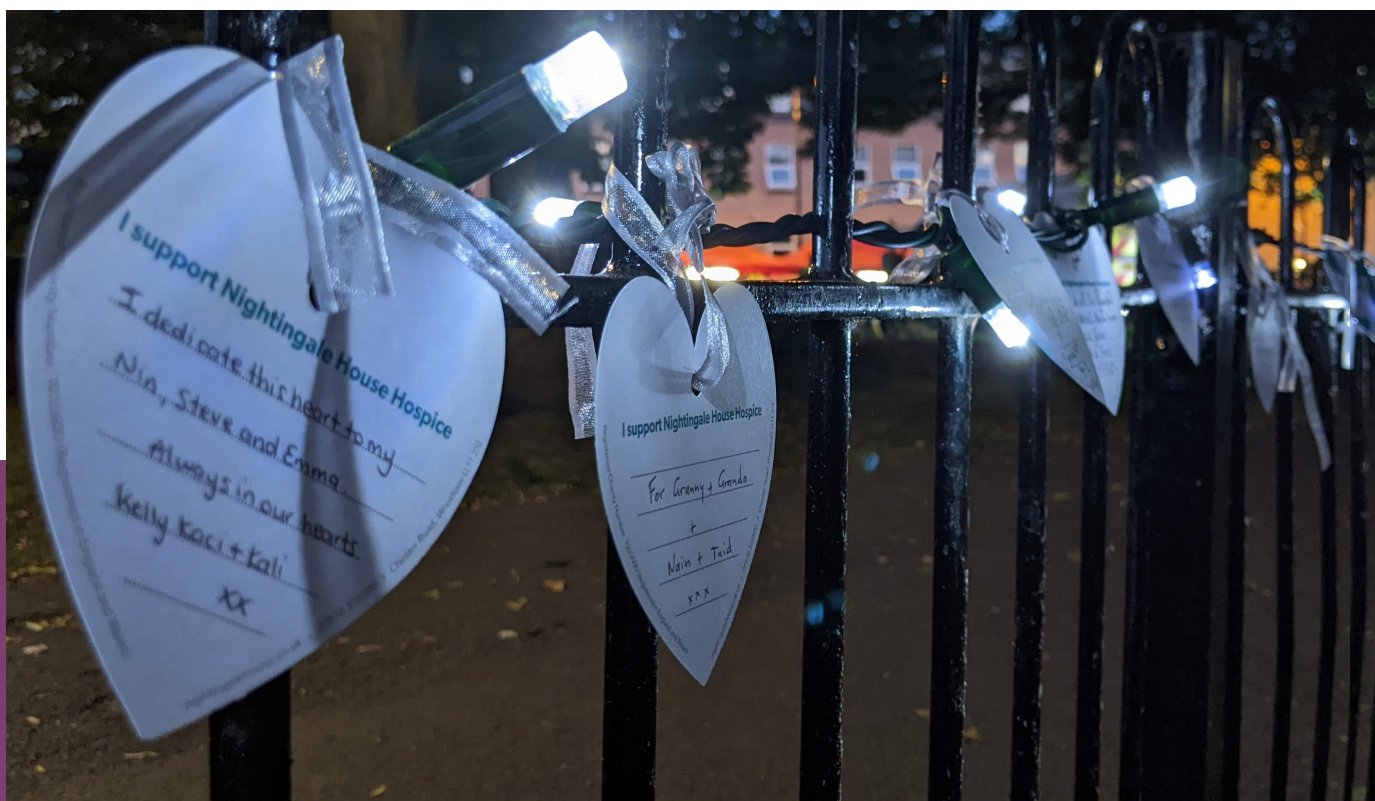
step taken brings us closer to our fundraising goals.

But it's not just about the walk itself – it's about the impact that each participant can make through their fundraising efforts. Every penny raised goes towards supporting the vital services provided by Nightingale House, from aromatherapy sessions to children's bereavement support and music therapy.

Every contribution, no matter how small, plays a crucial role in ensuring that we can continue to provide compassionate care and support to those who need it most.

As you embark on your fundraising journey, know that you're not alone. We're here to support you every step of the way, offering guidance and ideas to help you make a meaningful impact.

So, lace up your walking shoes, don your Midnight Walk T-shirt, and join us as we come together to celebrate compassion, unity, and the power of community. Together, we can make a difference.





SUMMER SUPER DRAW

100% OF PROFITS GO TO NIGHTINGALE HOUSE HOSPICE



Nightingale House Hospice
Hospis Tŷ'r Eos

CLOSING DATE: 17TH JUNE 2024

DRAW DATE: 21ST JUNE 2024

01978 313134

NIGHTINGALEHOUSE.CO.UK/SUMMERDRAW

**3 FANTASTIC
PRIZES TO BE WON!**

1ST - £5000

2ND - £2000

3RD - £1000